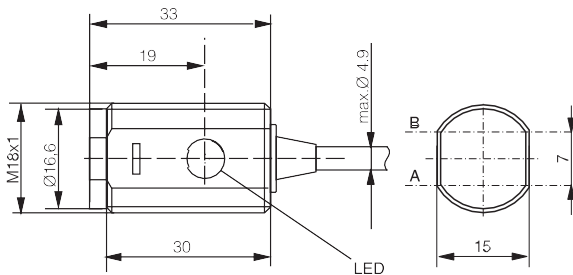
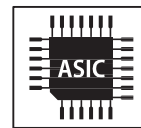
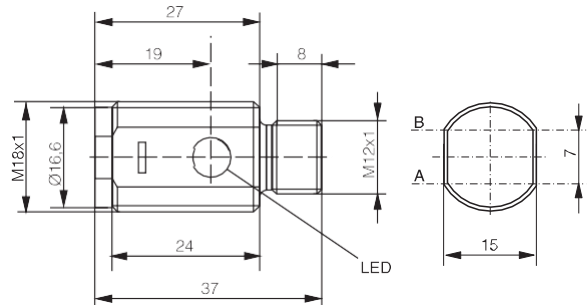


7'000 mm

- ✓ M18 short housing
- ✓ IO-Link
- ✓ Sensitivity adjustment via IO-Link
- ✓ Polarizing filter
- ✓ Calibrated range
- ✓ Immunity to mutual interferences



A: emitter axis B: receiver axis



A: emitter axis B: receiver axis

OPTICAL DATA		INTERFACE	
Sensing range typ. max.	20...7'000 mm <sup>1</sup>	Sensitivity adjustment	2'500...7'000 mm, IO-Link
Operating range	30...5'500 mm <sup>1</sup>	Indicator LED, green	Excess gain
Light source	LED, red 630 nm	Indicator LED, yellow	Sensing state
Light spot size (distance)	Ø 21 mm (1 m)/Ø 110 mm (6 m)	IO-Link	✓
Polarizing filter	✓		

<sup>1</sup>Reference reflector LXR-0000-084

ELECTRICAL DATA		MECHANICAL DATA	
Supply voltage range (U <sub>b</sub> )	10...30 VDC	Enclosure rating	IP67
Residual ripple	≤ 10% V <sub>pp</sub>	Ambient temperature operation	-25...+65°C
Output current	≤ 200 mA	Shock and vibration	IEC 60947-5-2
Signal PNP high/low	≤ (U <sub>b</sub> -2.0 V)/approx. 0 V	Weight (connector version)	6 g
Signal NPN high/low	Approx. U <sub>b</sub> /≤ 2.0 V	Weight (cable version)	71 g
Power consumption (no load)	≤ 15 mA	Housing material	ABS
Response time <sup>1</sup>	≤ 340 μs (normal)/≤ 1 ms/≤ 115 μs	Window material	PMMA
Switching frequency <sup>1</sup>	≤ 1.5 kHz (normal)/≤ 500 Hz/≤ 4.5 kHz	Connection cable	PVC, 2 m, 3-wire or 4-wire
Short circuit protection	✓	Connector type	M12 4-pin
Voltage reversal protection	✓		

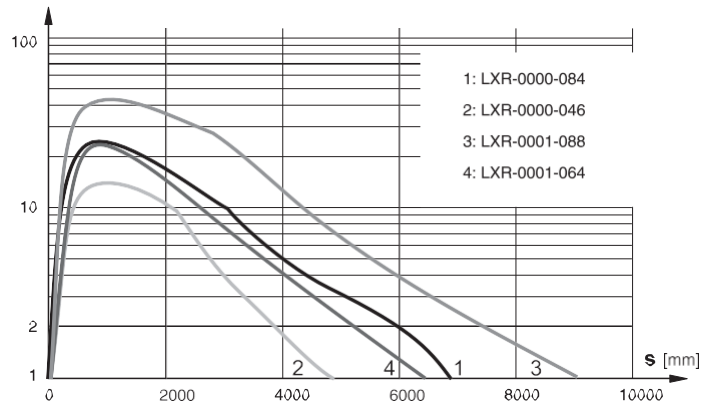
<sup>1</sup>By default, "Normal" mode. "Fine" and "Fast" modes selectable via IO-Link.

## SENSING RANGE

## EXCESS GAIN

Target	Operating range	Sensing range typ. max.
LXR-0000-084	30...5'500 mm	20...7'000 mm
LXR-0000-046	30...4'000 mm <sup>1</sup>	20...4'900 mm <sup>1</sup>
LXR-0001-088	30...7'300 mm <sup>1</sup>	20...9'200 mm <sup>1</sup>
LXR-0001-064	30...5'200 mm <sup>1</sup>	20...6'500 mm <sup>1</sup>

<sup>1</sup>Indicative value

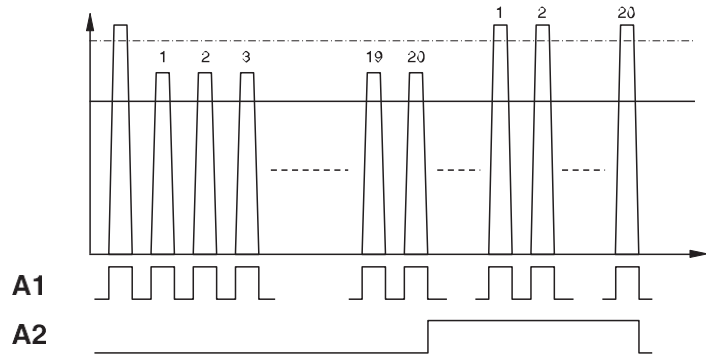


## IO-LINK FUNCTIONALITIES

## STABILITY ALARM OUTPUT (A2)

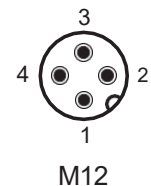
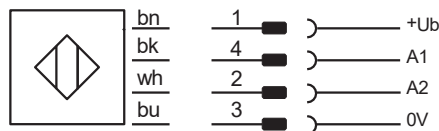
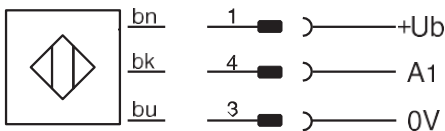
IO-Link version	1.0
SIO mode	Supported
Process data	Detection state & stability alarm
Baudrate	COM2 (38.4 kBaud)
Special functions	Output configuration, output timing, sensitivity, sensor mode, detection counter, event flags, maximum and actual sensor temperature

IO-Link specifications and IODD files may be downloaded from [www.contrinex.com](http://www.contrinex.com) (Download section)



## WIRING DIAGRAM

## PIN ASSIGNMENT



## AVAILABLE TYPES

Part number	Part reference	Polarity	Connection	Output (A1)	Output (A2)
620 600 182	LRR-M18PA-NMK-404	PNP	PVC, 2 m, 3-wire	Dark-on/IO-Link	-
620 600 183	LRR-M18PA-NMK-603	PNP	PVC, 2 m, 4-wire	Light-on/IO-Link	Dark-on
620 600 184	LRR-M18PA-NMK-60D	PNP	PVC, 2 m, 4-wire	Dark-on/IO-Link	Stability alarm
620 600 185	LRR-M18PA-NMK-302	NPN	PVC, 2 m, 3-wire	Dark-on	-
620 600 186	LRR-M18PA-NMK-101	NPN	PVC, 2 m, 4-wire	Light-on	Dark-on
620 600 187	LRR-M18PA-NMK-10B	NPN	PVC, 2 m, 4-wire	Dark-on	Stability alarm
620 600 188	LRR-M18PA-NMS-404	PNP	Connector M12 4-pin	Dark-on/IO-Link	-
620 600 189	LRR-M18PA-NMS-603	PNP	Connector M12 4-pin	Light-on/IO-Link	Dark-on
620 600 190	LRR-M18PA-NMS-60D	PNP	Connector M12 4-pin	Dark-on/IO-Link	Stability alarm
620 600 191	LRR-M18PA-NMS-302	NPN	Connector M12 4-pin	Dark-on	-
620 600 192	LRR-M18PA-NMS-101	NPN	Connector M12 4-pin	Light-on	Dark-on
620 600 193	LRR-M18PA-NMS-10B	NPN	Connector M12 4-pin	Dark-on	Stability alarm

Note: additional suffix can appear to indicate a revision version or a special version.

Operators of the products we supply are responsible for compliance with measures for the protection of persons. The use of our equipment in applications where the safety of persons might be at risk is only authorized if the operator observes and implements separate, appropriate and necessary measures for the protection of persons and machines. Terms of delivery and rights to change design reserved.